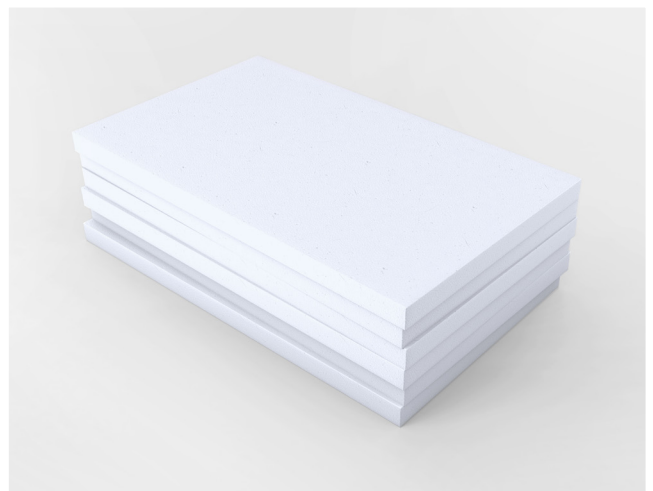
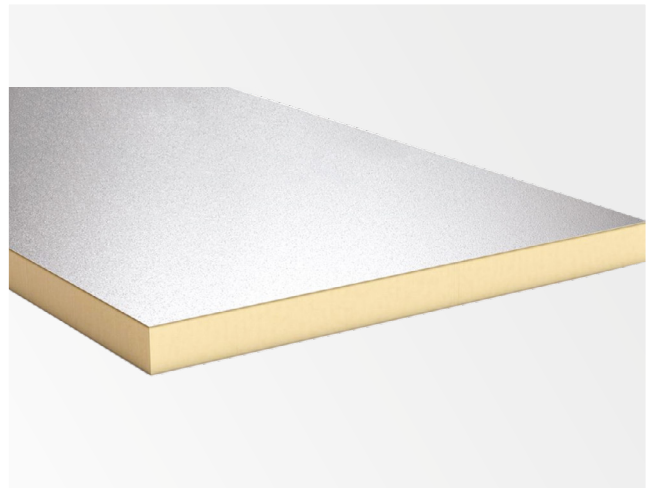




Advanced Performance
Materials

Performance Insulation Materials, Solutions, Panels and OEM Components



Advantage

- ✓ Premium quality materials
- ✓ Ultimate heat and thermal insulation
- ✓ Ultimate moisture and humidity protection
- ✓ Project-specific materials selection and production
- ✓ Fast delivery and production time
- ✓ Complete custom cutting and fabrication
- ✓ Ready to install solutions
- ✓ Much improved service life
- ✓ Customized R value
- ✓ Mold and bacteria resistant



Thickness: ½" - 15"

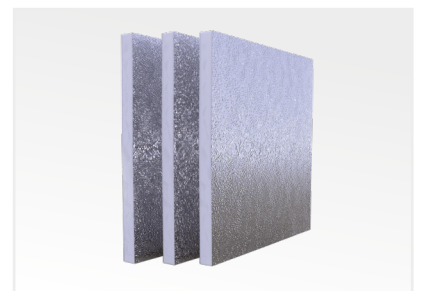
Standard Dimension (FT): 4X4, 4X6, 4 X 8, 5 X10, 5 X 12

Custom cutting and fabrication: Yes

Available Insulation Type: Mineral wool, Fiberglass, PUR/PU, EPS/XPS, Melamine foam, Duct insulation

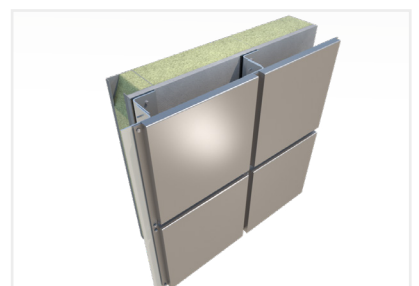
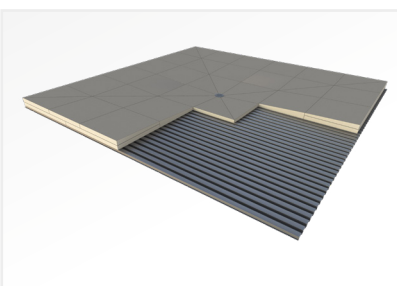
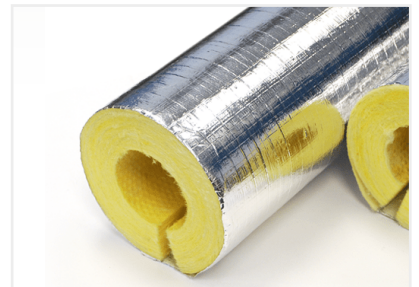
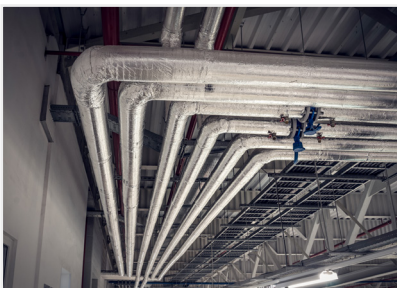
Material Specification

- ✓ Available thermal insulation value (R-value): 4-60
- ✓ Available density: 1- 60 lbs./cf. (pcf)
- ✓ Customized thickness: 3/4 – 40"
- ✓ Length and width: completely customized
- ✓ Material finish: unfaced, foil faced, fsk facing, custom laminated, customized panels
- ✓ OEM Fabrication: Drawing and design specific OEM component fabrication and production
- ✓ Mold and anti-bacterial resistance
- ✓ Fire performance: Class A fire rated and non-combustible
- ✓ Chemical and weather resistant
- ✓ Moisture and humidity resistant
- ✓ Material appearance: Rigid, semi-flexible, and flexible
- ✓ Compressive strength: 5- 50 psi
- ✓ Recycled content: up to 70% recycled content depending on the needs
- ✓ Ready to install products and solution
- ✓ Fully custom produced composite and laminated insulation panels
- ✓ 100% Made in USA



Application and Insulation Project

- ✓ Insulation of commercial and residential construction projects
- ✓ Building Foundation and structural insulation
- ✓ General insulation projects
- ✓ Roofing, ceiling and exterior wall insulation
- ✓ Rail insulation OEM components
- ✓ Oil and gas pipeline and storage facility insulation
- ✓ Insulation components and panels for transportation industries
- ✓ Cruise and boat insulation panels and components
- ✓ Cold storage and temperature-controlled vehicles insulation
- ✓ Packaging and shipping container insulation



Available Insulation Materials and Solutions

- ✓ Mineral wool blankets, batts and boards (un-faced, foil-faced and fsk-faced, laminated and composite panels)
- ✓ Fiberglass blankets, batts and boards (un-faced, foil-faced and fsk-faced, laminated and composite panels)
- ✓ Rigid PUR/PU (Polyiso) foam boards and panels (un-faced, foil-faced and fsk-faced, laminated and composite panels)
- ✓ Rigid EPS/XPS foam boards and panels (un-faced, foil-faced and fsk-faced, laminated and composite panels)
- ✓ Tapered panels made of XPS and PUR (Polyiso) (foil-faced and fsk-faced)
- ✓ Duct insulation products and solutions (project and application specific)
- ✓ Melamine foam insulation (un-faced, foil-faced and fsk-faced, and laminated)

Custom OEM Production and Fabrication

- ✓ Kerfed insulation OEM and components production
- ✓ Drawing specific OEM parts production
- ✓ Custom designed insulation parts and components production
- ✓ Insulation parts, components and OEM production for transportation industries, marine projects, oil and gas industries
- ✓ Composite insulation panels and components production construction projects



Contact



Advanced Performance Materials (APM)

66 West Flagler Street, Miami, FL 33130, USA.

☎ +1 786-776-4022

✉ contact@advancedmaterialsus.com

www.advancedmaterialsus.com

